

# Elite™ 4000

*Classic Beauty.  
Uncompromising  
Performance.*



*Premier Vinyl Windows...Built for a Lifetime.*

# *The Elite Window...*

## *A Lifetime Investment*

*“Lifetime” Investment  
for Savings on Utility  
Costs and Energy.*

*“Lifetime” Protection  
for Your Home with  
Heavier, Stronger  
Profiles to Withstand  
more Wind and Rain.*

*A “Lifetime” Warranty,  
including  
Glass Breakage.*

*“Lifetime” of  
Noise Reduction in  
Your Home.*

*Designed for a  
“Lifetime” of Easy  
Maintenance and  
Beautiful Appearance.*

*“Lifetime” of Making Your World a Better Place!*

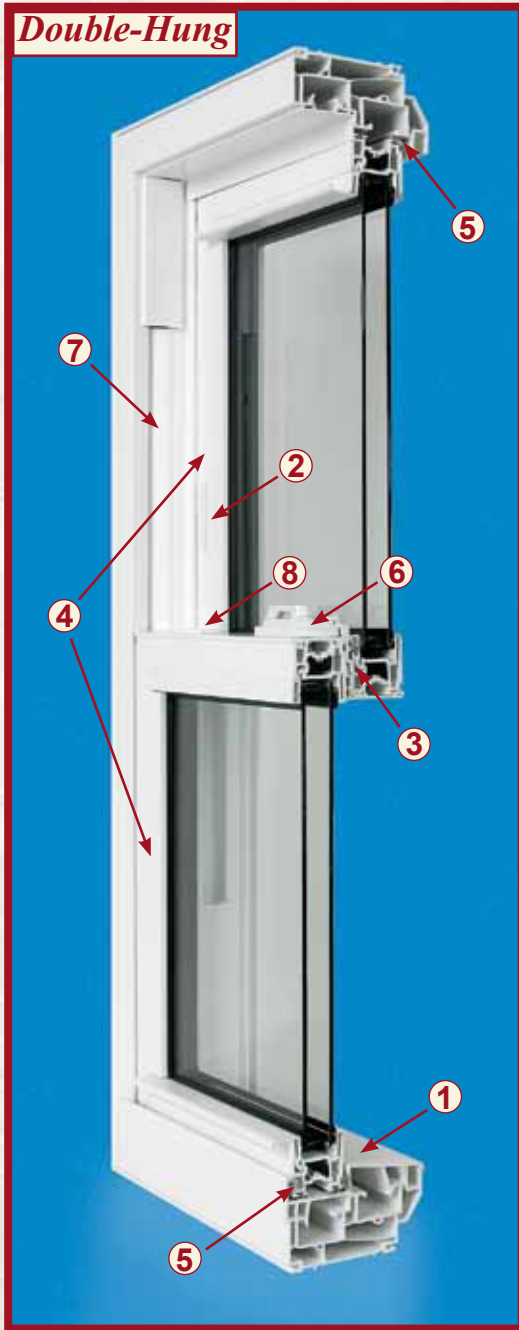
The logo for Elite 4000 features the word "Elite" in a serif font with a crown above the letter "i". Below "Elite" is the number "4000" in a large, stylized serif font. A decorative flourish or underline sweeps across the bottom of the "4000". A small "TM" trademark symbol is positioned to the right of the "Elite" text.

*Energy Star Certified for the Whole Country...and then some!*

*Energy Star was created by the Environmental Protection Agency to help  
consumers easily identify products that save energy.*

# Features and Benefits

## Double-Hung



### ALL Elite Windows -

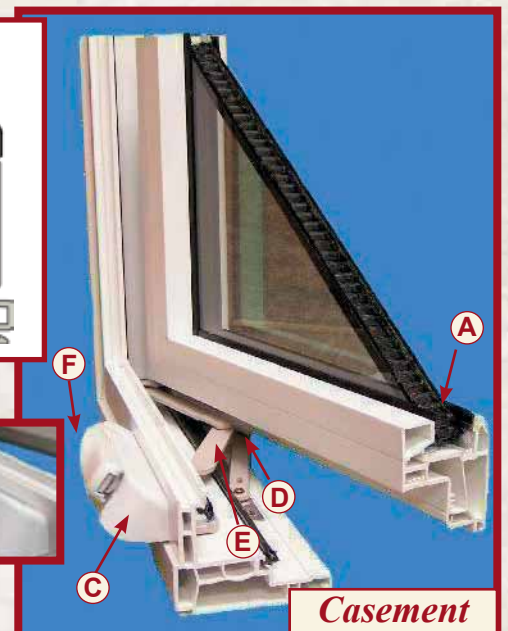
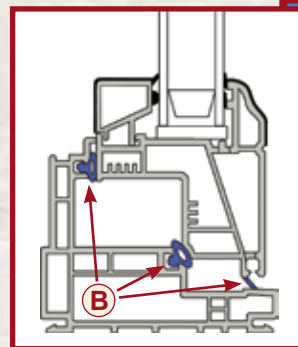
- **Lifetime, Non Pro-Rated Warranty is the Best Available** and is transferrable to second property owner. Includes Lifetime Glass Breakage!
- **Multi-Chambered, Fusion-Welded Frame and Sash** provides superior air tightness, thermal resistance, noise reduction and strength
- **Heavy-Duty, Solid Vinyl Construction .080" - .085" wall thickness** adds rigidity to keep frames square for precise fit and function
- **European-Designed, Low-Maintenance uPVC Profiles** Smoothest surface finish in the industry resists staining and looks new for years
- **1" Insulating Glass with Warm Edge Perimeter Seal** Energy Saving Low E with Gas Fill
- **Snap-In Glazing Bead with Co-Extruded Seal** provides a seamless sash to the outside elements and allows for easy glass replacement from inside the home

### Elite 4000 Double-Hung -

- ① **Combination Stepped/Sloped Sill** reduces air infiltration while allowing water run-off; Structural Grade 60 Rating
- ② **Dual, Spring-Loaded Night Latches** allow ventilation while deterring forced entry
- ③ **Interlocking Meeting Rails with Dual Finned Weatherstrip** reduces air infiltration and increases security
- ④ **Tilt-In Sashes** allow for easy glass cleaning from inside the home
- ⑤ **Three Finned Weatherstrip Seals where Sashes meet Frame** Four Finned weatherstrip seals at sill
- ⑥ **Heavy-Duty Non-Corrosive Die-Cast Cam Locks** easy to operate; draws sashes tightly together
- ⑦ **Concealed Sash Balance System** is quiet, smooth operating and allows for easy raising, lowering and tilting of sashes
- ⑧ **Recessed Latch Mechanisms** provide a streamlined look

### Elite 4400 Casement -

- **Multi-Point Locking System** provides extra security and draws sash up tight
- Ⓐ **Sashes Crank Out a Full 90°** allows for easy cleaning from inside the home
- Ⓑ **Triple-Seal System between Sash and Frame** offers superior thermal efficiency
- Ⓒ **Heavy-Duty, Non-Corrosive Die-Cast Hardware** has a streamlined appearance and is easy to operate
- Ⓓ **Hinges are Field Adjustable** to prevent sash sag
- Ⓔ **Concealed Hinges and Crank Mechanism** gives a clean, sleek appearance. Egress hardware optional.
- Ⓕ **Standard Folding Handle** prevents interference with blinds



Casement

# 12 Standard Exterior Colors

→ Unlimited Custom Colors Available ←

\*White  
\*Sandstone  
\*Forest Green  
\*Cocoa Brown  
\*Musket Brown  
\*Bronze

\*Beige  
\*Cream  
\*Burgandy Red  
\*Gray  
\*Granite Gray  
\*Black

All 12 Coated Exterior Colors are Available with a White or Beige Vinyl Interior or with any of the 3 Designer Woodgrain Foiled Interiors Shown Below.



Irish Oak



Medium Oak



Soft Cherry

Recommended to View an Actual Color Sample Before making Your Final Selection

# Triple Glazing

Provides the Ultimate Level of Energy Efficiency, Noise and Condensation Protection



## Power Pack

2 Lites of Superior LowE Glass & 1 Clear/2 Dead Air Spaces filled with....Argon.

## \*R5 - Triple Pack

2 Lites of Superior LowE Glass & 1 Clear/2 Dead Air Spaces filled with...Krypton/Argon Mix

Triple Glaze is a Superior Option for Your Home's Energy Management!

# Muntin Bar Options

Mounted between glass panes for easy cleaning

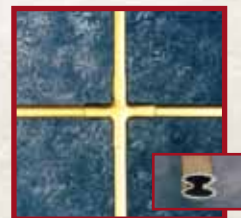
Styles -



Rectangular Available in all Configurations

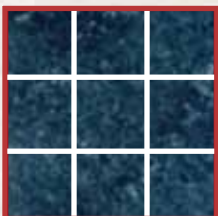


Contoured Available in Colonial and Single Prairie

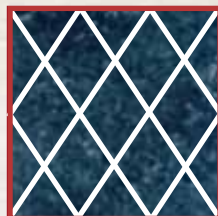


Rounded Pewter or Brass tone in Single Prairie

Configurations -



Colonial



Diamond



Single Prairie

# LowE 366/Argon Glass Option "Standard" with NEAT Coating



LowE/366 Glass from Cardinal offers the ultimate glass performance by providing the highest levels of year- round comfort and energy savings, making it the perfect glass no matter where you live. Delivers the ideal balance of solar control and high visibility! This option comes "standard" with NEAT Coating. Neat Coating from Cardinal offers naturally clean glass. It harnesses the sun's UV rays to loosen dirt so water can rinse it away, leaving windows virtually spotless. Your windows stay clean longer and will clean easier. Your home stays cooler in the summer and warmer in the winter. Enjoy the view!

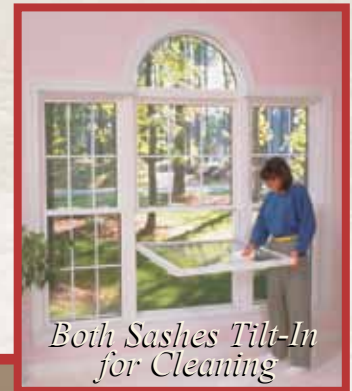
Elite™  
4000

## Double-Hung

*The design of the Elite 4000 Double-Hung combines great looks with first class performance, offering you a dramatic upgrade as replacement windows or initial elegance for your new home.*



*Double Hungs shown with Half-Circles and Colonial Muntins*



*Both Sashes Tilt-In for Cleaning*



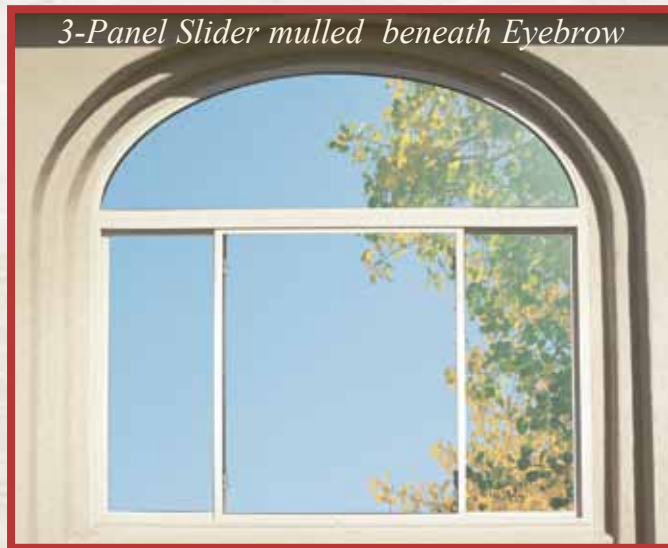
# Sliding Windows

*The Elite Lift-Out 4050 2-Panel Slider and 4100 3-Panel Slider feature beveled outer frames for a softer appearance. A continuous handle rail and tandem rollers allow the sashes to open and close easily.*

*2-Panel Sliders mullled beneath large Picture Windows to form a wall of light*



*3-Panel Slider mullled beneath Eyebrow*



# Picture Windows & Shapes

*Bring in the light and enhance your view of the world with the many shapes and sizes of Elite 4150 Picture Windows.*



# Elite™ 4000 Tilt Slider

*Sashes Slide for Ventilation and Tilt in for Easy Cleaning!*



## *Features and Benefits*

- *Tilt-In Sashes allow for easy glass cleaning from inside the home. Plus, the unique tilt feature provides a quick and safe exit during a fire or other emergency.*
- *Dual, Spring-Loaded Night Latches allow ventilation while deterring forced entry*
- *Interlocking Meeting Rails with Dual Weatherstrip reduces air infiltration and increases security*
- *Three Finned Weatherstrip Seals where Sashes meet Frame*
- *Heavy-Duty, Non-Corrosive Die-Cast Cam Locks easy to operate; draws sashes tightly together*
- *Concealed Tilt Mechanism smooth operating for easy sliding and tilting of sashes*

*Plus all these great features of Elite windows -*

- *Lifetime, Non Pro-Rated Warranty is the Best Available and is transferrable to second property owner. Includes Lifetime Glass Breakage!*
- *Multi-Chambered, Fusion-Welded Frame and Sash provides superior air tightness, thermal resistance, noise reduction and strength*
- *Heavy-Duty, Solid Vinyl Construction .080" - .085" wall thickness adds rigidity to keep frames square for precise fit and function*
- *European-Designed, Low-Maintenance Virgin uPVC Profiles Smoothest surface finish in the industry resists staining and looks new for years*
- *1" Insulating Glass with Warm Edge Perimeter Seal LowE 366/Argon option with NEAT coating standard available*
- *Snap-In Glazing Bead with Co-Extruded Seal provides a seamless sash to the outside elements and allows for easy glass replacement from inside the home*



*The Elite 4250 2-Panel Tilt Slider may be perfect for bedroom applications where Emergency Egress is a concern. Check with your local building inspector.*



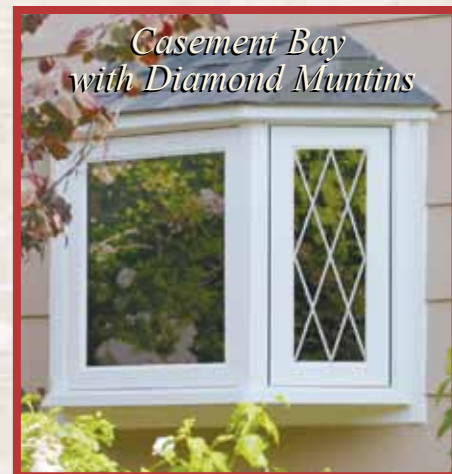
Elite™  
4000

## Bay Windows

*Add space and value to your home with an eye catching Elite Bay Window...Double-Hung or Casement model. The large center section gives an expansive view and the birch or red oak seat board provides the beauty of natural wood.*



*Bay with Colonial Muntins and Double-Hung in Center*



*Casement Bay with Diamond Muntins*

*All Bays shown with Dealer Installed Roofs*





## *Bow Windows*

*Equal lite Casements and Picture Windows form the gentle curve of an Elite Bow Window. The sweeping, panoramic view adds distinctive style and beauty to your home. Available in multiple sections.*

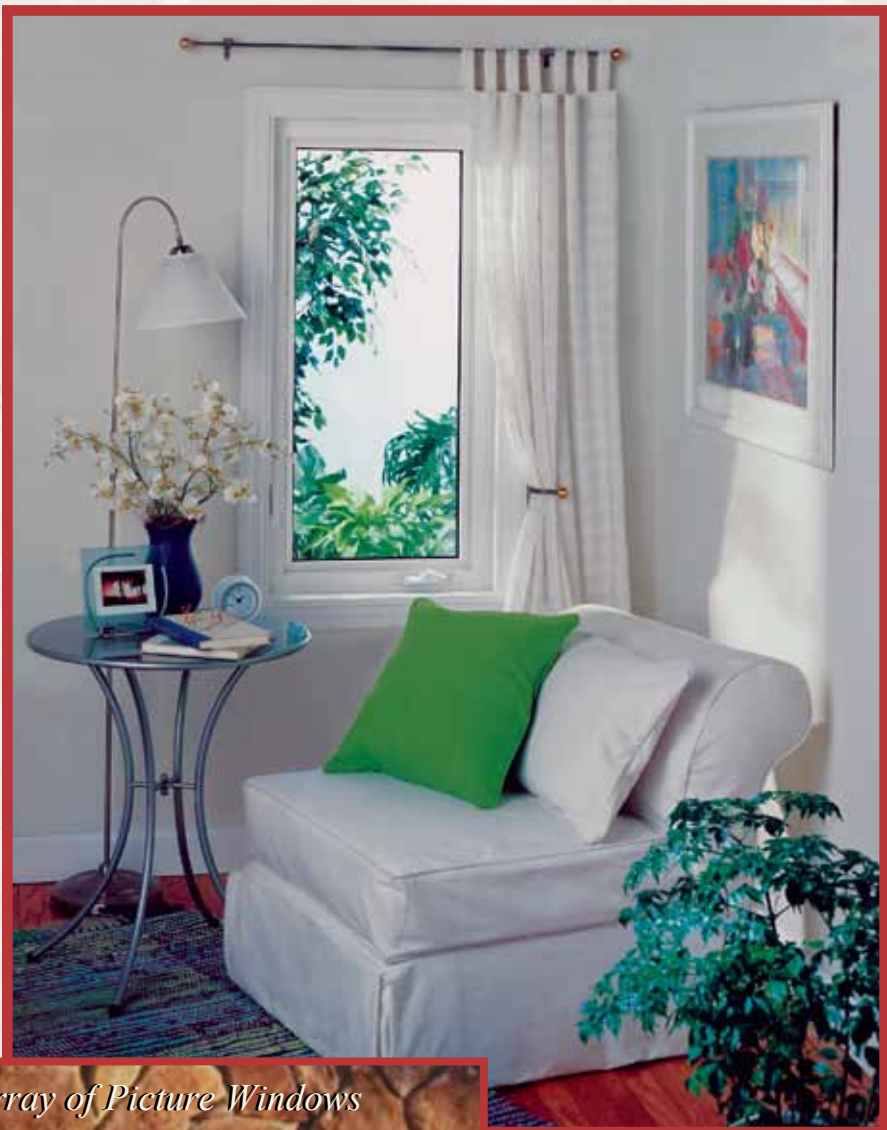


*All Bows shown with Dealer Installed Roofs*



# Casement

*The smooth operating Elite 4400 Casement has a multi-point locking system for greater security and superior air tightness. Corrosion resistant gearing provides years of worry free operation.*



*Casement Flankers in an array of Picture Windows*





## *Awning*

*The Elite 4450 Awning Window tilts outward at the bottom, allowing ventilation even on wet, rainy days.*

*Awnings can be mulled to other window styles for creative ventilation solutions.*



*Beautiful Painted Colors and Elegant Woodgrains Available*

## Insulated Glass



### Warm Edge Perimeter Spacer

Best warm edge technology available! Comes standard on all Elite 4000 windows.



### Energy Saving Low-E Glass

High-Performance glass option saves energy and provides greater interior comfort.



### Thermally Efficient Gas Fills

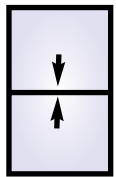
Greatly enhances insulation factor! Reduces fuel bills and helps keep home quieter.

## About *ENERGY STAR*...

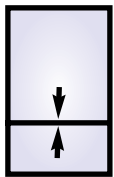


The *ENERGY STAR*® label was created by the Environmental Protection Agency (EPA) to help consumers quickly and easily identify windows and other products that save energy. The performance requirements for *ENERGY STAR* qualifying products are tailored to meet the energy needs of the country's different climate regions. Elite 4000 windows meet *ENERGY STAR* criteria for the entire United States!

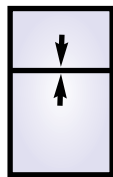
## Elite 4000 Window Styles and Options



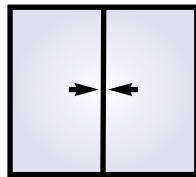
Double-Hung



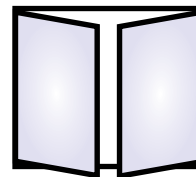
Oriel



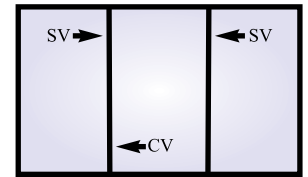
Reverse Oriel



2-Panel Lift-Out Slider



2-Panel Tilt Slider



3-Panel Side or Center Vent Slider



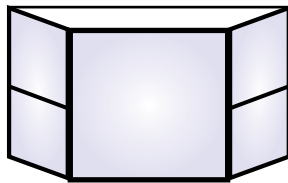
Picture



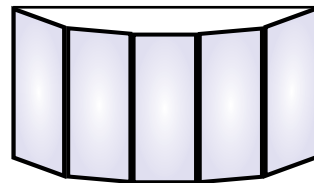
Casement



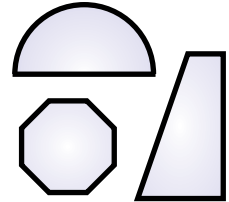
Awning



Bay Unit



Bow Unit



Special Shapes

*All Units can be mulled together to form a wide variety of stylish configurations!*

**Colors:** White, Beige, Woodgrains and Optional Painted Exteriors

**Glazing:** Clear, Low E, Obscure, Tinted (Tempered) or Tempered Obscure Rain

**Screen Mesh:** Charcoal Fiberglass, BetterVue, Charcoal or Bright Aluminum



*Discover the Great Indoors*

*Family Owned Since 1978*

*A Partnership in Quality Home Improvements*